



# WHITIKAHU SCHOOL

Kia ora koutou, nau mai hoki mai.

Welcome back to Term 2.

I hope everyone had a great term break. It's been so nice seeing everyone back at school this week. It was also great to see all the sidelines busy with the beginning of winter sports.

We are really excited about the term ahead and look forward to supporting all our learners as they continue on their learning journeys at Whitikahu School.

All our staff have worked hard during the holiday period to set up wonderful learning experiences to ensure that our learners have engaging and meaningful learning opportunities.

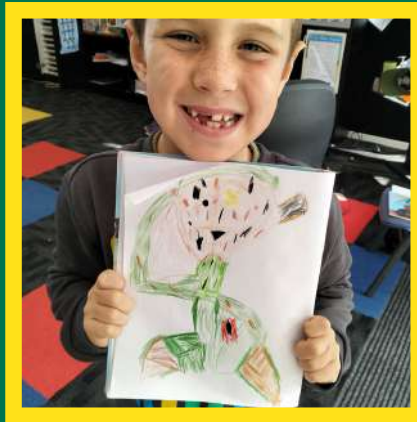
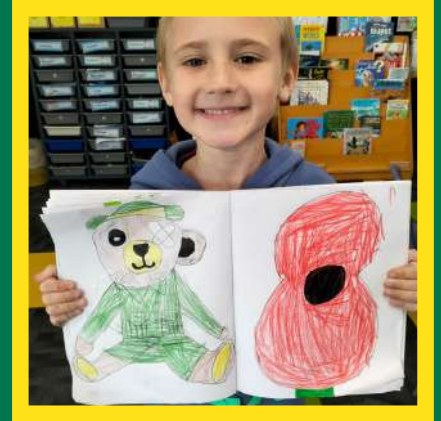
We look forward to seeing our Whitikahu Whanau at the many school events we have on this term.



# TERM 2 - WEEK 1 - FRIDAY 3RD MAY



## WEEKLY HIGHLIGHTS





TERM 2 - WEEK 1 - FRIDAY 3RD MAY



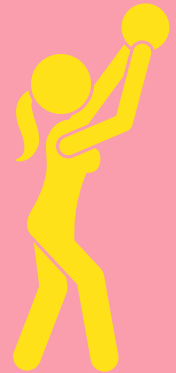
# WHITIKAHU SPORTS

## THE SWIFTS

*(Netball Intermediate)*



Player of  
the Day:  
Leah Hodel



# TERM 2 CALENDAR



WEEK	MONDAY	TUESDAY	WEDNESDAY	THURSDAY	FRIDAY
<b>1</b>	29 April  First Day of Term 2	30th April	1st May	2nd May	3rd May
<b>2</b> <small>NZ Sign Language Week</small>	6th May  World Vision Junior Youth Conference <small>(House Leaders &amp; Student Ambassadors)</small>	7th May	8th May	9th May	10th May
<b>3</b> <small>Primary Science Week Bullying Free Week</small>	13th May	14th May	15th May  Hardcourt Day	16th May	17th May  Pink Shirt Day
<b>4</b>	20th May  3 Way Conferences	21st May  3 Way Conferences	22nd May  NEST Consulting 'Positive Puberty Plus' Programme Y6-8	23rd May	24th May
<b>5</b> <small>Sāmoa Language Week</small>	27th May	28th May  Cross Country	29th May	30th May	31st May  Teacher Only Day
<b>6</b>	3rd June  King's Birthday	4th June	5th June  EWCS Cross Country	6th June	7th June  Science Fair <small>FLIGHT Learning Journey Exhibition</small>
<b>7</b>	10th June	11th June	12th June  Field Days	13th June  Field Days	14th June  Field Days
<b>8</b> <small>Volunteer Week</small>	17th June	18th June	19th June	20th June	21st June
<b>9</b>	24th June	25th June	26th June  Matariki Whakanuia	27th June	28th June  Matariki Public Holiday
<b>10</b>	1st July	2nd July	3rd July	4th July	5th July  Red Nose Day  Last Day of Term 2

# NOTICES



Term 2  
Week 1

## Drum Lessons

Experienced tutor offering one on one drum tuition during school hours.

Lessons are Half an hour (weekly) and are \$25 per lesson. Students are taught to read drum music. Hire drum kids are available (limited number). 8 years and older.

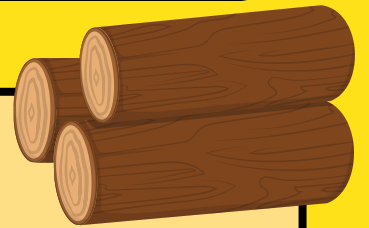
Phone / Tex Malcolm 021 152 3747

## Sport

If your child is playing sport this season send photos and results and this can be incorporated into our Weekly Newsletter!

Email  
tiffany.callow@whitikahu.co.nz

## PTA Firewood Fundraiser



The days are definitely getting chillier! We have a huge stack of firewood for sale. Mix of seasoned gum + oak. Bring a trailer and fill it yourself for \$120/m<sup>3</sup>

Email [pta@whitikahu.school.nz](mailto:pta@whitikahu.school.nz) for collection info.





# NOTICES



Term 2  
Week 1



Waikato Police • [Follow](#)

2h ·

School is back, but not the same as it was! 🙄

Starting Monday (29th April), the speed limit around all Hamilton primary, intermediate and secondary schools will change to 30km/h.

Everyone has an important part to play when it comes to road safety, particularly around schools, and this change aims to make the roads around our schools safer for all road users.

When travelling near schools always remember

Be extra alert in case a child runs out in front of you without warning. Sometimes children can't be seen if they are behind cars so look under cars for the possibility of feet.

Be aware that there will be children on the roads cycling to and from school. Give them space and share the road.

The speed limit is 20km/h when driving past a stationary school bus, and you need to reduce your speed below 30km/h when passing schools.

Often drop off and pick up zones can be crowded before and after school. Suggesting a meeting point further down the road might be a safer option to avoid congestion around the area.

Even small increases in speed result in a much greater increase in your stopping distance, and that can mean the difference between life and death for our children.

You can learn more about this change here - [hamilton.govt.nz/saferschoolspeeds](https://hamilton.govt.nz/saferschoolspeeds)

# NOTICES



Term 2  
Week 1

FREE



Happy Mother's Day!

## Mother's Day Family Night



Join us in celebrating all mums this Mothers day with loads of FREE entertainment, games, crafts and MORE. Bookings essential.

**Date:** Thursday 9th May 2024

**Time:** 5.00 - 7.00pm

### Activities and fun for the whole family

- Make a Gift for Mum. These include a Scrunchie, Eye Mask, Sand Art Card, Flower Craft.
  - Colouring Station
  - Face Painting and More at Bunnings Te Rapa!
- Community Groups instore:  
Mobility Dogs, Hamilton-Waikato Guinea Pig Club,  
Hamilton Blind Social Group.



Refer to your local store for details and book your spot using the QR Code above.

**BUNNINGS**  
warehouse







# Three-Way Conferencing

In Week 4, on Monday 20th May and Tuesday 21st May, we will be having 3 Way Conferences (formerly referred to as Parent/Teacher Interviews) at school from 1–6pm on both days. An email will be sent out next week (Week 2) for parents to book a 15 minute time slot on either Monday 20th May or Tuesday 21st May (between 1–6pm), to meet with their child and their child's classroom teacher, to have a 3 Way Conference. In this round of 3 Way Conferences, parents and whaanau will hear about their child's learning goals, reflections, academic progress, assessment results, curriculum levels, inquiry learning and CARES (our school values).

School will operate as per usual on the 3 Way Conference days but parents can pick up their children early from 1pm onwards if they wish to do so on Monday 20th and Tuesday 21st. Whilst teachers are running 3 Way Conferences, an alternative plan with Mr Harper will be made from 1–3pm for students still at school.

## What is a 3 Way Conference?

- Three-way conferences are a conversation between the student, their parents/whaanau, and their teacher.
- Students share their learning progress and achievement, often using selected pieces of work in an e-portfolio, learning journal or presentation.
- The student is actively involved in the learning and reporting process, reflecting the intent of The New Zealand Curriculum.
- Students, parents/whaanau, and the teacher sit together and discuss the student's learning, with the student taking an equal role in leading the learning conversation.
- It is a conversation about what the students are learning at school rather than what they are doing at school.
- The role of the parents/whaanau is to listen to their child, ask questions and encourage the student to expand and explain information further.
- The role of the teacher is to facilitate and lead the conversation about the student's learning and prompt their child when needed.
- The role of the student is to share their learning with their parents and reflect on the progress they have made so far this year.

## What is the purpose of a 3 Way Conference?

- Students are actively involved in the learning and reporting process.

## 3 Way Conferences are designed to achieve one or more of the following goals:

- To help students demonstrate evidence of learning
- To teach students the process of reflection and self-evaluation
- To facilitate the development of students' organisational and oral communication skills and to increase their self-confidence
- To encourage students, parents, and teachers to engage in open and honest dialogue
- To encourage students to accept personal responsibility for their learning
- To increase parent understanding of their child's learning through improving attendance at and satisfaction with the reporting process.

At the conclusion of the 3 Way Conference, a printed-out report will be given to whaanau to take home which will replace our Mid-Year Reporting process and will reflect our current focuses. I have attached a 'mock' exemplar in this email to give you an idea of what the report will look like (as well as the slides that students will refer to in the 3 Way Conference presentations).

We invite extended whaanau to attend the 3 Way Conferences along with parents to support the learning of our aakonga at Whitikahu School.



# Pukemokemoke Bush Reserve



## Interested in planting native trees in a reserve near Hamilton?

The **Pukemokemoke Bush Trust** has many native trees to plant and are looking for volunteers to help in May and June 2024. We'd love you to join us for a few hours in May or June at Pukemokemoke.

Saturday **18 May**, from 1pm, with an afternoon tea afterwards +

Saturday **15 June**, from 1pm, with an afternoon tea afterwards

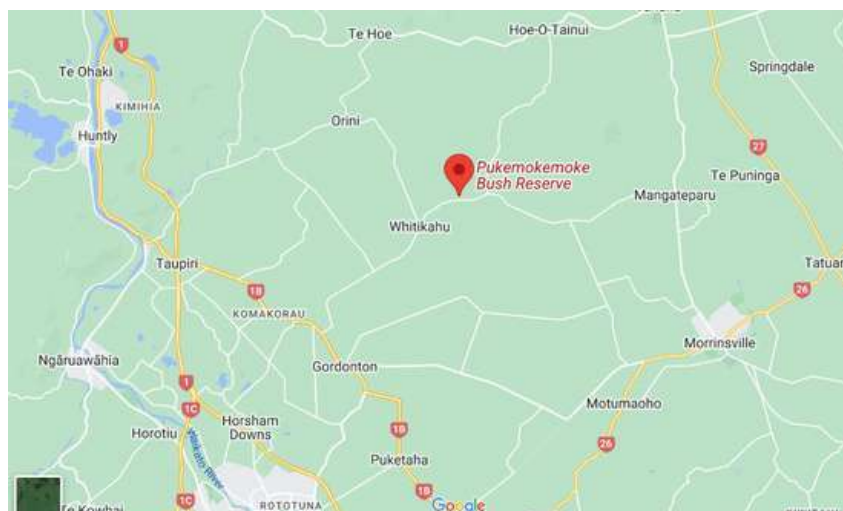
**Who:** Everyone welcome, bring the family and friends

**Questions:** [info@pukemokemoke.nz](mailto:info@pukemokemoke.nz)

**Bring:** Gloves, spade, boots and a drink bottle

**Where:** Tauhei Road - near Whitikahu. Approx 20 mins drive from Hamilton (see map)

Park in the carpark then walk into the shelter at the log hauler site (5 mins walk)



For more information on the reserve see our website:

[Pukemokemoke Bush Reserve • David Johnstone Pukemokemoke Bush Trust](#)



# WHITIKAHU SCHOOL

## COMMUNICATION

At Whitikahu School, we have four main platforms for communication to our wider community, beyond the use of phone calling. We aim to be as transparent and highly communicative as possible with the wider community and use the four different platforms for specific purposes.



### SEESAW

Seesaw is an app that we use at school to showcase students learning. It functions similarly to a class blog where parents and caregivers are provided a “window” into the learning activities and experiences of their children. Parents are encouraged to comment, interact and engage on the platform as teachers or students post snapshots of learning.



### SCHOOL APP

The School App functions as a platform for quick alerts to parents and the wider community. It houses our school calendar as well as options for reporting absenteeism..



### EMAILS

Important information regarding students, events or updates is usually communicated by School Leadership, Administration, Teachers or other Staff through emailing.



### NEWSLETTER

Each week, a newsletter is emailed out to the community with highlights from the week, snapshots of learning, advertisements and notices, Students of the Week, Upcoming dates and general reminders.